

**TATA STEEL**



**Colorcoat HPS200 Ultra<sup>®</sup>**

Super durable, guaranteed performance pre-finished steel



# Working together

Tata Steel is an international company providing steel products and services to customers worldwide. We stand for 'Value in steel' and through our technical excellence and understanding of our markets, we help our customers achieve results.

## About Tata Steel

Tata Steel is one of Europe's largest steel producers. We serve many different and demanding markets worldwide, including aerospace, automotive, construction, energy and power, and packaging. Our primary steelmaking operations in the UK and the Netherlands are supported by a global sales and distribution network.

Innovation and continuous improvement are at the heart of our performance culture. We aim to create value by offering a sustainable and value-added steel product range supported by unrivalled customer service. By working in partnership with you, we find the best solutions to meet your needs and help your business to perform.

Our European operations are a subsidiary of Tata Steel Group, one of the world's top ten steel producers. With a combined presence in nearly 50 countries, the Tata Steel Group including the Europe operations, Tata Steel Thailand and NatSteel Asia, has approximately 80,000 employees across five continents and a crude steel production capacity of over 28 million tonnes.

Tata Steel is a customer focused, innovative solutions-driven company, which combines international expertise with local service. We manufacture, process and distribute steel products and services to customers worldwide. Tata Steel manufactures steel for various sectors including domestic appliances, manufactured goods, construction, packaging and many others as well as providing design, technology and consultancy services.

## Our commitment to our customers

We will play our part in protecting and enhancing Tata's reputation for sustainable business success combined with corporate citizenship. We are proud to be part of Tata Steel and are dedicated to understanding your business.

We will support you to perform in your market and grow together for the future by putting you first in everything we do.

# Contents

				Colorcoat HPS200 Ultra® by Tata Steel	04
				Guarantees	05
				Huskisson dock grain store, England	06
				Hollandia production hall, The Netherlands	08
				Nautical centre, The Netherlands	10
				RNLI technical base, Ireland	12
				Weston-Super-Mare pier, England	14
				Los Hornillos composting plant, Spain	16
				Greater Manchester waste facility, England	18
				Amoras sludge plant, Belgium	20
				Peacehaven waterworks, England	22
				Czjaka sewage plant, Poland	24
				Bulmers bottling plant, Ireland	26
				Common sulphur project, Qatar	28
				Maltanskie aquapark, Poland	30
				Suwalki aquapark, Poland	32
				Sports centre, The Netherlands	34
				Huntstown powerstation, Ireland	36
				Enstedværket powerstation, Denmark	38
				St. Kilda powerhouse, Scotland	40
				Manjung power station, Malaysia	42
				El Teniente copper mine, Chile, S. America	44
				4 Ashes, energy from waste, Staffordshire, UK	46
				Lincoln, energy from waste, Lincolnshire, UK	48
				Remondis recycling point, Szczecin, Poland	50

# Colorcoat HPS200 Ultra® for super durable applications

Colorcoat HPS200 Ultra® pre-finished steel provides exceptional performance and corrosion resistance for building envelope applications. It is backed up with extreme testing and real world global data to demonstrate the best combination of excellent colour stability, gloss retention and outstanding durability.

Colorcoat HPS200 Ultra® has been used in some of the most demanding applications around the world, this brochure showcases some of them.

#### Product features and benefits:

- Optimised Galvalloy™ metallic coating for exceptional corrosion resistance and cut edge protection.
- Surpasses requirements of Ruv4 and RC5+ as per EN 10169:2022 proving excellent colour and gloss retention and corrosion resistance.
- Exceeds requirements of CPI5 as per EN 10169:2022 demonstrating excellent barrier properties when used internally.
- Made in the UK and certified to BES 6001 Responsible Sourcing standard.
- Scintilla® embossed as a mark of authenticity from Tata Steel.
- Double-sided option providing a robust barrier on the reverse side of the steel substrate for buildings with demanding internal and external environments.
- Fully recyclable with full product traceability and REACH compliance.
- Confidex® Guarantee for up to 40 years in Zone 1 areas for the weatherside of industrial and commercial buildings with no inspection or maintenance to maintain its validity.
- A project based warranty outside Confidex® zones may be available on a case by case basis for the internal or external side of standard cladding applications.

# Peace of mind

#### The Confidex® Guarantee

Confidex® is the product performance guarantee for Colorcoat HPS200 Ultra® and Colorcoat Prisma®, when used in an external conventional building envelope application namely roof and wall cladding using single skin, built-up or composite panel construction in industrial and commercial buildings.

Confidex® offers the most comprehensive guarantee for pre-finished steel available in Europe with Colorcoat HPS200 Ultra® being guaranteed for up to 40 years. Superior and unrivalled improvements in colour stability and gloss retention are translated into a durable product with great longevity.

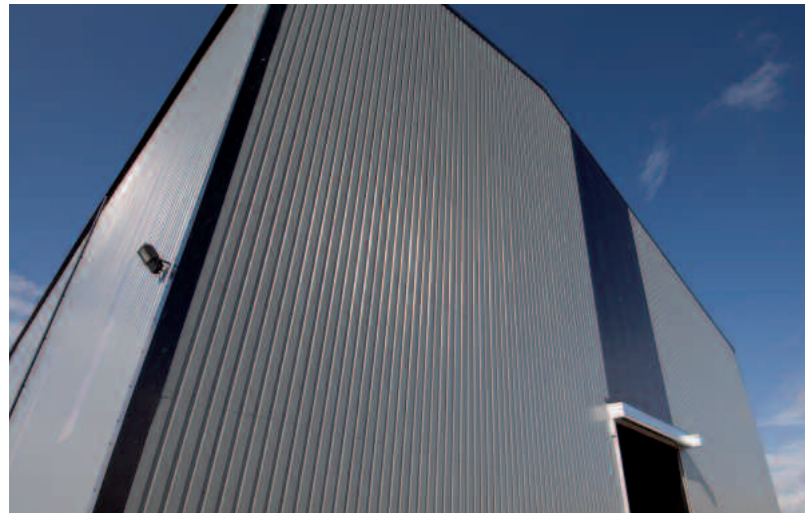
The Confidex® Guarantee is project specific and upon online registration provides a contractual relationship between Tata Steel and the building owner meaning that in the case of a claim the contact with Tata Steel is direct rather than having to go through the supply chain, saving time and money. What's more this is transferable should the building owner change by simply filling in the form on the back of the guarantee certificate.

For more information on Confidex® zones please visit [www.colorcoat-online.com](http://www.colorcoat-online.com)

#### Other warranties

Whilst Confidex® has always been restricted to the weathering performance of the external cladding, we have recognised the growing emergence of demanding internal environment projects, such as energy from waste plants, and may offer a non-Confidex® warranty on a case by case basis for Colorcoat HPS200 Ultra® used internally.

Application specific warranties are also available for non-standard cladding applications. Please contact Tata Steel for further information.



## Grain store Liverpool, England

The buildings' exposure to high winds and salt water dictated the need for a product of high quality and performance. Originally constructed in 1960 and located in a very exposed, aggressive, marine location in Liverpool's Huskisson Dock, this grain storage facility had fallen into disrepair.

Colorcoat HPS200 Ultra® was chosen to provide an effective long term solution for the refurbishment of the building envelope to transform the buildings' appearance and protection from the weather.

### PROJECT DETAILS

**Client:** Mersey Docks & Harbour Company

**Contractors:** Lester Fabrications & Cladding Co. Ltd. and Houghton & Co. Ltd.

**System Manufacturers:** Tata Steel Building Systems UK and Euroclad Group

**Colorcoat® product:** Colorcoat HPS200 Ultra® by Tata Steel (*Single sided*)

**External guarantee:** 30 years Confidex® Guarantee

**Colours:** Goosewing Grey (RAL 7038) and Merlin Grey (RAL 180 40 05)

**Year:** 2010



Goosewing Grey



Merlin Grey





## Production hall Rotterdam, The Netherlands

The erection of these buildings is part of a complete renewal of the Business Park called "Stormpolder". The client wanted the buildings to be recognisable from the Brienoord-bridge. Frie van Os, director Hollandia Real Estate; "We have a broad experience with building halls and have seen various qualities in it. The projects that score the highest on abrasion resistance, corrosion resistance and colour retention were built with Colorcoat®. For our own buildings we don't want anything else but Colorcoat®. We are very proud of their colourful presence."

### PROJECT DETAILS

Client: Hollandia

Architect: Metropolis Architects

Main Contractor: Zuid Nederlandse Staalbouw

Cladding Contractor: S.W.D. Dak- en Geveltechniek

System Manufacturer: SAB-profiel bv

Colorcoat® product: Colorcoat HPS200 Ultra® by Tata Steel (Double sided)

External guarantee: 30 years Confidex® Guarantee

Colours: Denim (RAL 5014), Ice Blue (RAL 230 80 10) and Sargasso (RAL 5003)

Repertoire® Med Blue and Lavender

Year: 2008



Denim



Ice Blue



Sargasso



# Super durability



## Nautical centre Scheveningen, The Netherlands

The Scheveningen harbour has gone through a major regeneration with traditional fishing companies making way for hospitality and recreational buildings. Concentrated around the marina the selection of the pre-finished steel was very important due to the highly corrosive coastal environment. Colorcoat HPS200 Ultra® was specified due to it achieving RC5 corrosion classification in accordance with EN 10169:2010 making it the ideal choice for long lasting building envelopes in coastal areas. This is now superseded by RC5+.

### PROJECT DETAILS

**Client:** Malherbe B.V.

**Architect:** KOW Architectuur

**Main Contractor:** Dura Vermeer Leidschendam

**Cladding Contractor:** Meerman Konstruktie B.V.

**System Manufacturer:** SAB-profiel bv

**Colorcoat® product:** Colorcoat HPS200® by Tata Steel

**External guarantee:** 25 years Confidex® Guarantee

**Colours:** Albatross (RAL 240 80 05) and Moorland Green (RAL 100 60 20)

**Year:** 2006



Albatross



Moorland Green



# Super durability



## RNLI HQ Swords, Co. Dublin, Ireland

Located inland within 2km of the Irish coastline, the RNLI Divisional Headquarters in Swords, near Dublin, uses Colorcoat HPS200® (now superseded by Colorcoat HPS200 Ultra®) in Goosewing Grey for the roof. Colorcoat HPS200 Ultra® pre-finished steel provides super durability and corrosion resistance, demonstrating proven performance and reliability.

### PROJECT DETAILS

**Client:** RNLI

**Architect:** Ellis Belk Associates Ltd.

**Main Contractor:** Buildcon Construction

**Cladding Contractor:** Colleen Construction

**System Manufacturer:** ETEX Ireland Ltd.

**Colorcoat® product:** Colorcoat HPS200® by Tata Steel (*Single sided*)

**External guarantee:** 30 years Confidex® Guarantee

**Colour:** Goosewing Grey (RAL 7038)

**Year:** 2005



Goosewing Grey





## Pier Weston-Super-Mare, England

Devastated by fire in 2008, the Weston-Super-Mare Grand Pier and Pavilion building were rebuilt and re-opened to the public in 2010. Colorcoat HPS200 Ultra® was chosen for the external walls of the Pavilion due to its ability to perform in harsh coastal environments, surpassing the requirements of Ruv4 and RC5 as per EN 10169:2010, now superseded by RC5+.

### PROJECT DETAILS

**Client:** Grand Pier Ltd.

**Architect:** Angus Meek Partnership Ltd.

**Main Contractor:** John Sisk & Son Ltd.

**Cladding Contractor:** Yorkshire Sheeting

**Colorcoat® product:** Colorcoat HPS200 Ultra® by Tata Steel (*Single sided*)

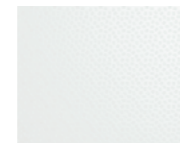
**External guarantee:** 30 years Confidex® Guarantee

**Colours:** Merlin Grey (RAL 180 40 05) and White (RAL 9003)

**Year:** 2010



Merlin Grey



White







## Compost plant Valencia, Spain

Los Hornillos is a major waste recycling and reclamation centre in Valencia. The composting plant processes thousands of tonnes of waste organic matter every year. This process results in a corrosive atmosphere that places heavy demands on the fabric of the building. The plant operator chose double sided Colorcoat HPS200 Ultra® from Tata Steel for this demanding application as it exceeds the requirements of CP15 as per EN 10169:2022 demonstrating excellent barrier properties when used internally

### PROJECT DETAILS

**Client:** EMTRE (Entidad Metropolitana para el Tratamiento de Residuos)

**Architect:** Estudio AF, Madrid

**Main Contractor:** Hornillos obra UT

**Cladding Contractor:** Covaltia

**System Manufacturer:** Metalperfil

**Colorcoat® product:** Colorcoat HPS200 Ultra® by Tata Steel (*Double sided*)

**External guarantee:** 20 years Confidex® Guarantee

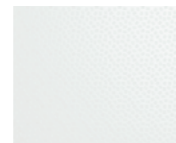
**Internal guarantee:** 20 years (specific to this project)

**Colours:** Goosewing Grey (RAL 7038) and White (RAL 9003)

**Year:** 2011



Goosewing Grey



White





## Waste facility Manchester, England

Greater Manchester Waste PFI recycles around 1.3 million tonnes of waste material each year. Double sided Colorcoat HPS200 Ultra® was specified, providing the extra protection required for the demanding internal environment of the facility.

### PROJECT DETAILS

**Client:** Viridor Laing Waste Management

**Architect:** Scott Wilson Architects

**Main Contractor:** Costain

**Cladding Contractor:** Lakesmere

**System Manufacturer:** Euroclad Group

**Colorcoat® product:** Colorcoat HPS200 Ultra® by Tata Steel (*Double sided*)

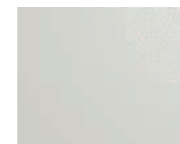
**External guarantee:** 40 years Confidex® Guarantee

**Colours:** Goosewing Grey (RAL 7038), Hamlet (RAL 9002) and Heather (RAL 040 70 05)

**Year:** 2011



Goosewing Grey



Hamlet



Heather





## Sludge plant Antwerp, Belgium

In the port of Antwerp, the robust and durable properties of Colorcoat HPS200 Ultra® are known. There is the large sludge plant Amoras. The interior walls, facade and roof of the building are made of Colorcoat HPS200 Ultra®. The factory dredges sludge from the port and removes pollution, chemicals and moisture, so that the residue in the future can be reused. For example, as raw material for concrete or brick. By these processes the material can be exposed to increased concentrations of chemicals.

### PROJECT DETAILS

**Client:** Jan de Nul N.V.

**Main Contractor:** Cordeel N.V.

**Sub contractor:** MSB Gevel- en Dakbekleding

**System Manufacturer:** N.V. Joris Ide & SAB-profiel bv

**Colorcoat® product:** Colorcoat HPS200 Ultra® by Tata Steel (*Single sided*)

**Colours:** Albatross (RAL 240 80 05) and Merlin Grey (RAL 180 40 05)

**Year:** 2011



Albatross



Merlin Grey





Images courtesy of Prater Ltd.

## Waterworks Peacehaven, England

Peacehaven Wastewater Treatment Works features the UK's largest green roof of its kind, covering an area of almost two and a half football pitches. The green roof has been installed over 18,000m<sup>2</sup> of RoofDek D100 by Tata Steel in Olive Green double sided Colorcoat HPS200 Ultra<sup>®</sup>. Due to the demanding internal environment at Peacehaven Wastewater Treatment Works, double sided Colorcoat HPS200 Ultra<sup>®</sup> was also used on the walls, to provide a robust barrier on the reverse side of the steel substrate.

### PROJECT DETAILS

Client: Southern Water

Architect: Montgomery Watson Harza (MWH)

Main Contractor: 4Delivery Consortium

Cladding Contractor: Prater Ltd.

System Manufacturer: Tata Steel Building Systems UK

Colorcoat<sup>®</sup> product: Colorcoat HPS200 Ultra<sup>®</sup> by Tata Steel (*Double sided*)

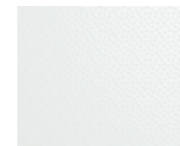
Guarantee: 30 years Confidex<sup>®</sup> Guarantee

Colours: Olive Green (RAL 100 30 20) and White (RAL 9003)

Year: 2011



Olive Green



White





## Sewage plant Warsaw, Poland

Sewage treatment produces an extremely corrosive environment that can quickly cause severe deterioration of internal walls and ceilings. To ensure long-term durability and resistance to corrosion, Czajka needed a proven and high performing pre-finished steel product for the interior of the building. The corrosion resistance of Colorcoat HPS200 Ultra® has been proven in rigorous independent tests far in excess of the industry norm.

### PROJECT DETAILS

**Client:** Miejskie Przedsiębiorstwo Wodociągów i Kanalizacji w m. st. Warszawie S.A. (Warsaw Water Company)

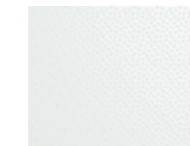
**Main Contractor:** Warbud S.A.

**Profiler:** Blachy Pruszyński Sp. z o.o.

**Colorcoat® product:** Colorcoat HPS200 Ultra® by Tata Steel (*Double sided*)

**Colour:** White (RAL 9003)

**Year:** 2010



White





## Bottling plant County Tipperary, Ireland

The Bulmers site in County Tipperary, Ireland, used Colorcoat HPS200® (now superseded by Colorcoat HPS200 Ultra®) for the roof and walls of the bottling plant and surrounding buildings. Colorcoat HPS200 Ultra® has been developed to deliver the ultimate in performance in demanding environment both internally and externally, with its impressive sustainability credentials. Long term durability and environmental impacts were the key focus for this project.

### PROJECT DETAILS

**Client:** Bulmers

**Architect:** John Allen Architects

**Main Contractor:** Sisk & Mulcahy Construction

**Cladding Contractor:** Paddy Wall & Sons - Phase 1  
Gleeson Roofing N. Ireland - Phase 2

**System Manufacturer:** Euro Quality Cladding

**Colorcoat® product:** Colorcoat HPS200® by Tata Steel (Single sided)

**External guarantee:** 30 years Confidex® Guarantee

**Colours:** Goosewing Grey (RAL 7038), Hamlet (RAL 9002),  
Meadowland (RAL 100 80 20), Moorland Green (RAL 100 60 20).

**Year:** 2007



# Super durability



## Sulphur project Qatar

The Common Sulphur Project in Qatar is a world class sulphur processing facility located within Ras Laffan Industrial City. Due to the harsh internal and external environment double sided Colorcoat HPS200® (now superseded by Colorcoat HPS200 Ultra®) was specified for its robustness and resistance to many chemicals and substances.

### PROJECT DETAILS

**Client:** Washington Group International/Al Jabar Consortium (WGI/AJ) via Quantum International Consulting

**Operator:** Qatargas

**System Manufacturer:** SAB-profiel bv

**Colorcoat® product:** Colorcoat HPS200® by Tata Steel (*Double sided*)

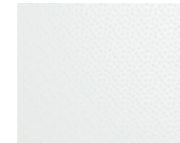
**Guarantee:** 10 years (specific to this project)

**Colours:** Albatross (RAL 240 80 05) and White (RAL 9003)

**Year:** 2010



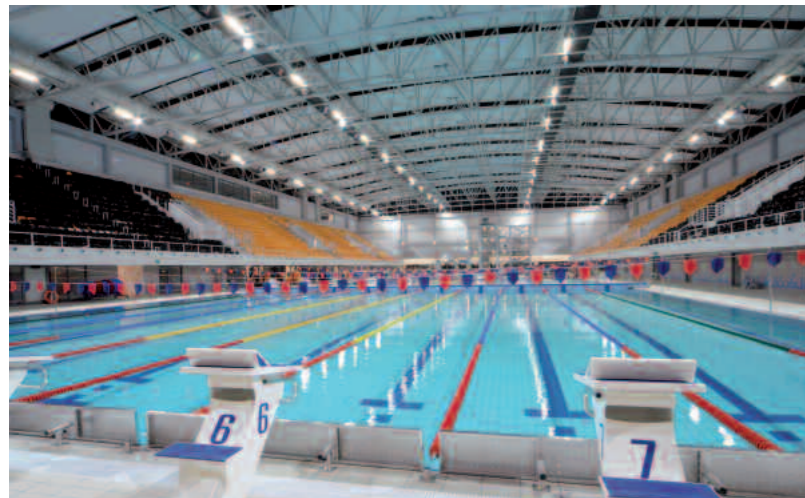
Albatross



White



# Super durability



## Aquapark Poznan, Poland

The sports and recreation complex Termy Maltańskie encompasses 1,500m<sup>2</sup> of recreational swimming pools and has high levels of humidity. The structure of the internal ceiling utilises double sided Colorcoat HPS200 Ultra® pre-finished steel in White, and classified as a CPI5 product as per EN 10169:2022, the highest classification, ensuring the highest degree of corrosion protection.

### PROJECT DETAILS

**Client/Building owner:** POSiR and Termy Maltańskie Sp. z o.o. on behalf of the City of Poznań

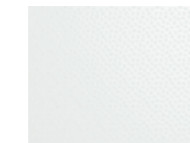
**Architect/Contractor:** Consortium of Alstal Budownictwo A. Szczupak (leader), Holma Sp. z o.o., Tiwwal Sp. z o.o. oraz Budownictwo Drogowe „Altkom” Sp. z o.o.

**System Manufacturer:** Blachy Pruszyński Sp z o.o.

**Colorcoat® product:** Colorcoat HPS200 Ultra® by Tata Steel (*Double sided*)

**Colour:** White (RAL 9003)

**Year:** 2011



White







## Aquapark Suwalki, Poland

The Aquapark in Suwałki is one of the most modern water sports and recreation complexes in Poland. Due to the harsh internal environment the pool hall interior is manufactured from double sided Colorcoat HPS200 Ultra® pre-finished steel, which ensures corrosion protection in the highest degree.

### PROJECT DETAILS

**Client:** Miejska Dyrekcja Inwestycji w Suwałkach/Miasto Suwałki

**Building owner:** OSiR Suwałki/Miasto Suwałki

**Architect:** ReStudio Architektury Rafał Jacaszek

**System Manufacturer:** Budmat

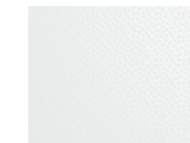
**Contractor:** UNIBEP S.A.

**Colorcoat® product:** Colorcoat HPS200 Ultra® by Tata Steel (*Double sided*)

**Internal guarantee:** 10 years for the ceiling (specific to this project)

**Colour:** White (RAL 9003)

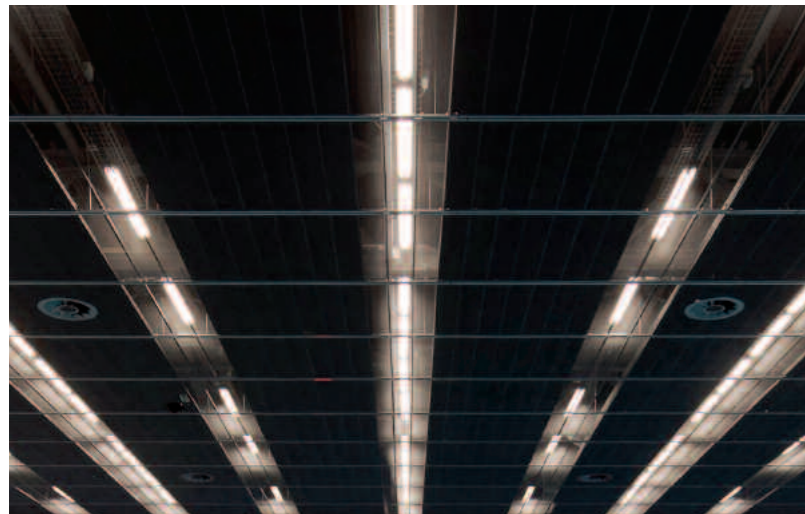
**Year:** 2010



White



# Super durability



## Sports centre Amsterdam, The Netherlands

Colorcoat HPS200 Ultra® is classified as a CPI5 product. This is the highest classified level of corrosion protection for interiors and means that Colorcoat HPS200 Ultra® is suitable to be used in the most demanding internal environments such as for the ceiling of swimming pools.

### PROJECT DETAILS

**Client:** Ronald McDonalds Centre

**Architect:** Fact Architects

**Main Contractor:** Wessels Zeist

**System Manufacturer:** SAB-profiel bv

**Colorcoat® product:** Colorcoat HPS200 Ultra® by Tata Steel (*Single sided*)

**Colour:** Black (RAL 9005)

**Year:** 2010



Black





## Powerstation Huntstown, Ireland

Colorcoat HPS200® (now superseded by Colorcoat HPS200 Ultra®) was specified for the Huntstown Power Station. The Power Station provides up to 20% of the Irish National Grid electricity from burning natural gas and through distillate oil, meaning the building envelope needed to be able to withstand the harsh, demanding environment. Colorcoat HPS200 Ultra® has been subjected to natural and accelerated testing, often way beyond the required standards.

### PROJECT DETAILS

**Client:** Huntstown Power Co. Ltd.

**Architect:** Mitsubshi/Jacobs Baktie Acting, Manchester

**Main Contractor:** Mitsubshi Heavy Industry

**Cladding Contractor:** SIAC Roofing and Cladding, Cork

**System Manufacturer:** ETEX Ireland Ltd.

**Colorcoat® product:** Colorcoat HPS200® by Tata Steel (*Single sided*)

**Colour:** Albatross (RAL 240 80 05)

**Year:** 2007



Albatross





## Powerstation Denmark

Enstedværket, Denmark is a combined heat and power plant on the Aabenraa Fjord. The salt in the air combines with other particles and heat to produce extremely corrosive environment. Double sided Colorcoat HPS200 Ultra® was specified for its robust resistance to a wide range of chemicals substances in harsh internal and external environments.

### PROJECT DETAILS

**Client:** Dong Energy A/S

**Main Contractor:** Persolit A/S Munkkebo

**System Manufacturer:** Tata Steel

**Colorcoat® product:** Colorcoat HPS200 Ultra® by Tata Steel (*Double sided*)

**External guarantee:** 30 years Confidex® Guarantee

**Colours:** Ardenne (RAL 7022) and Burano (RAL 3004)

**Year:** 2011



Ardenne



Burano





## Powerhouse St. Kilda, Scotland

Due to the remote location of the Scottish island of St. Kilda the specification of materials for the Powerhouse was a major consideration because of its exposure to the elements. A significant issue was the requirement for a very low maintenance building due to its inaccessibility during severe weather conditions and any repairs or ongoing maintenance would prove costly and difficult.

### PROJECT DETAILS

**Architect:** W A Fairhurst and Partners

**Main Contractor:** R J McCloud

**Cladding Contractor:** Isleburn Structural Services

**Colorcoat® product:** Colorcoat HPS200® by Tata Steel (*Single sided*)

**External guarantee:** 25 years Confidex® Guarantee wall,

21 years Confidex® Guarantee roof

**Colours:** Goosewing Grey (RAL 7038), Hamlet (RAL 9002) and

Merlin Grey (RAL 180 40 05)

**Year:** 2001



Goosewing Grey



Hamlet



Merlin Grey



# Super durability



## Power Station - Manjung Malaysia

A product was required that could resist the hot and humid Malaysian weather, particularly as it has exceptionally high UV all year round. In addition, the plant is in a coastal environment, which adds airborne sea salt to the aggressive environment.

### PROJECT DETAILS

System Manufacturer: European Profiles (EPM)

Colorcoat® product: Colorcoat HP200® (*Double sided*) and Colorcoat HPS200 Ultra® by Tata Steel

Colours: Britannia, Dark Sand, Goosewing Grey, Hamlet, Honesty, Straw and White

Year: 2003, 2004, 2014, 2016 \* Pictures taken in 2018



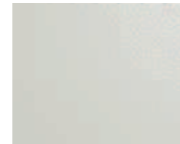
Britannia



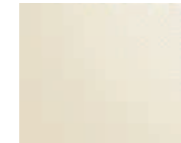
Dark Sand



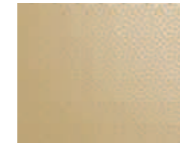
Goosewing Grey



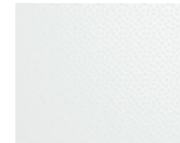
Hamlet



Honesty



Straw



White





## El Teniente - Chile, South America

Situated in the Andes mountain 2300m above sea level and 100km south of Santiago, El Teniente is the world's largest underground copper mine. Due to the aggressive environment the refurbishment of the mine that took place over three stages required a product with exceptional performance.

Colorcoat HPS200® (now superseded by Colorcoat HPS200 Ultra®) was chosen due to its exceptional durability allowing it to withstand the harsh environment of the Andes mountains and the demanding requirements of a copper mine.

### PROJECT DETAILS

Client: Codelco

System Manufacturer: Formac SA , (who supplied to Instapanel) Villalba

Colorcoat® product: Colorcoat HPS200® by Tata Steel (Double sided)

Colours: Poppy Red, Bamboo, Solent Blue (all double sided with Hamlet on reverse)

Year: 2001, 2002, 2004 (Pictures taken in 2017)



Poppy Red



Bamboo



Solent Blue





## 4 Ashes - energy from waste Staffordshire, UK

Colorcoat HPS200 Ultra® was chosen for the weather face of the Trimapanel® system in Merlin Grey to provide a robust and aesthetically pleasing external appearance for this impressively designed modern building with a 40 year Confidex® Guarantee.

### PROJECT DETAILS

Client: Veolia

System Manufacturer: Tata Steel Building Systems UK

Main Contractor: Clugston Construction

Installer: Northern Cladding Ltd

Architect: Tata Steel Projects

Colorcoat® product: Colorcoat HPS200 Ultra® by Tata Steel

Colour: Merlin Grey (Externally)

Year: 2013



Merlin Grey







## Lincoln - energy from waste

### Lincolnshire, UK

This energy from waste facility, visible on the Lincolnshire landscape, near Whisby called for a robust cladding solution that was durable enough to withstand the test of time and hold its aesthetics for many years to come. Built using Colorcoat HPS200 Ultra® pre-finished steel, the facility was provided with an external façade that is not only long-lasting, robust and durable, but also delivers a visually striking appearance.

**PROJECT DETAILS**  
**Client:** Lincolnshire County Council  
**Main Contractor:** CNM/Clugston Construction  
**Architect:** E & Weedon Partnership  
**System Manufacturer:** Eurobond  
**System:** Rockspan Extra wall panels  
**Colorcoat® product:** Colorcoat HPS200 Ultra® by Tata Steel  
**Colours:** Jade Green, Black  
**Year:** 2015



Jade Green



Black





## Remondis recycling point Szczecin, Poland

Choosing the right products and materials used to build the facility was paramount for Remondis, not just for the durability requirements of the building but also its environmental impact on the surroundings.

Colorcoat HPS200 Ultra® pre-finished steel met all the buildings requirements and was reinforced by the guarantee that is provided with the product.

### PROJECT DETAILS

Client: Remondis

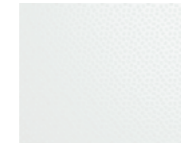
System Manufacturer: Pruszynski Sp. z o.o.

System: Trapezoidal

Colorcoat® product: Colorcoat HPS200 Ultra® by Tata Steel

Colour: White (RAL 9003)

Year: 2012



White



[www.colorcoat-online.com](http://www.colorcoat-online.com)

**Trademarks of Tata Steel UK Limited**

Albatross, Burano, Colorcoat, Colorcoat Connection, Colorcoat HPS200, Colorcoat HPS200 Ultra, Confidex, Galvalloy, Hamlet, Honesty, Meadowland, Repertoire, Sargasso and Scintilla are trademarks of Tata Steel UK Limited.

Whilst the Colorcoat Connection® helpline takes care in giving out information or advice, it does so only on the basis of the facts supplied. Tata Steel Europe Limited and its subsidiaries do not accept any liability for providing inaccurate, misleading or incomplete information or advice or any reliance which may be placed on such information or advice. The recipient should satisfy itself of the accuracy and appropriateness of any information or advice before relying on it.

While care has been taken to ensure that the information contained in this publication is accurate, neither Tata Steel, nor its subsidiaries, accept responsibility or liability for errors or for information which is found to be misleading. Suggestions for, or descriptions of, the end use or application of products or methods of working are for information only and Tata Steel Europe Limited and its subsidiaries accept no liability in respect thereof.

Before using products or services supplied or manufactured by Tata Steel and its subsidiaries, customers should satisfy themselves as to their suitability.

**Sales Contact Details**

**Tata Steel**

Shotton Works

Deeside

Flintshire CH5 2NH

United Kingdom

T: +44 (0) 1244 812345

**Colorcoat Connection® helpline**

T: +44 (0) 1244 892434

E: [colorcoat.connection@tatasteel.eu](mailto:colorcoat.connection@tatasteel.eu)

**For other countries and languages**

Please visit [www.colorcoat-online.com](http://www.colorcoat-online.com)

Copyright 2024 Tata Steel UK Limited. Registered Office: 18 Grosvenor Place, London, SW1X 7HS. Registered in England No. 2280000

Language English UK 0824



Scan for the latest version of this literature.